



Neenah Office

693 Yorkshire Dr.
Neenah, WI 54956
(920) 720-9885—Office/Fax
(920) 858-5910—Cell

Charlotte Office

2904 Treasure Hill Court
Matthews, NC 28105
(704) 847-6435—Office/Fax

Atlanta Office

119 Highgreen Ridge
Peachtree City, GA 30269
(770) 487-7846—Office
(404) 234-55301—Cell
(888) 799-5916

Problem

A save-all tank lined with chemical resistant tile had been in service for many years. Over the years the chemical attack had deteriorated the properties of the tile to the point where the protective glazing was nearly gone, the mortar joints had broken down and rust from rebar was migrating to the surface.

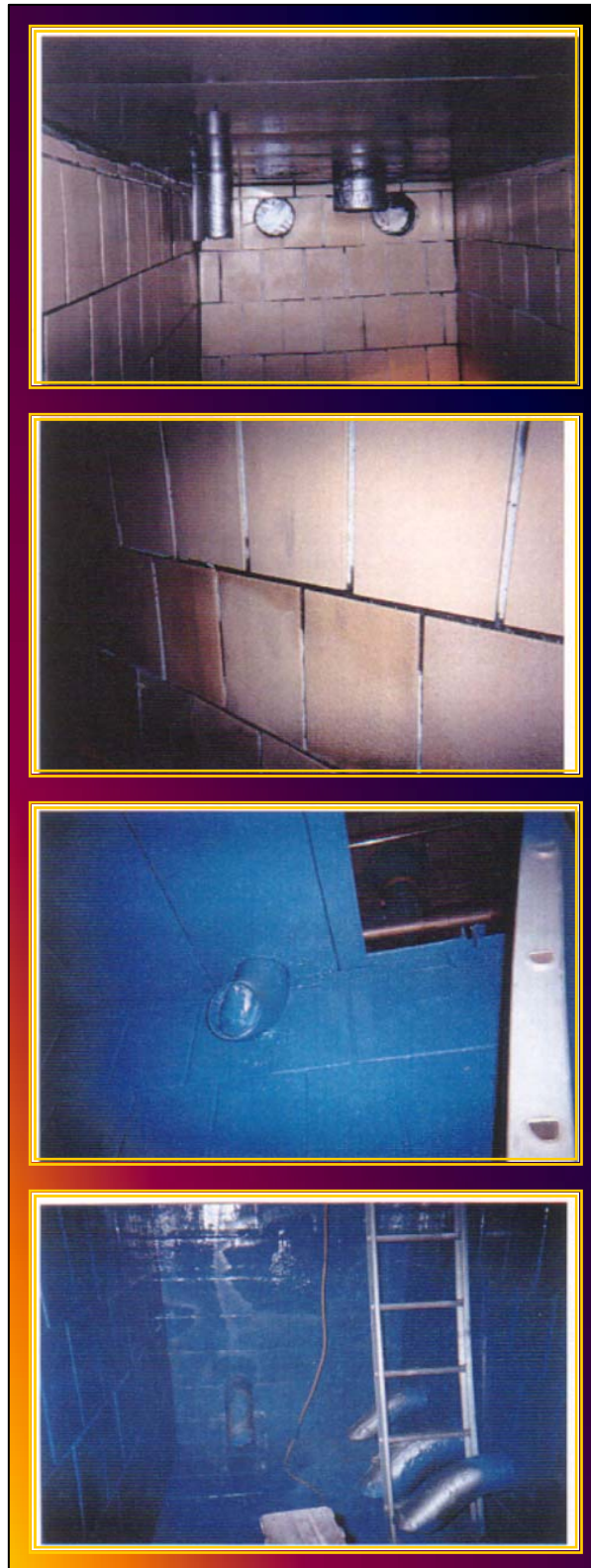
The tile quality had worsened to the point where annual repair of repointing the joints and/or replacing fallen tile was no longer adequate. The mill's only recourse was a complete tile replacement, but with production demands, the paper machine could not tolerate a shutdown long enough to satisfy this type of repair. The window for repair was limited to a 16 hour maintenance shutdown.

Solution

A modern solution using an isopolymer liner was proposed after taking into consideration the physical and chemical properties of tank contents. The extremely fast cure time (dries to the touch within 30 seconds and can be returned to service in 3 hours) made it an ideal choice for the short downtime. Other benefits realized were the high elongation properties of the liner that would tolerate any thermal and structural movement, good bond strength between the liner and the tile and the MONOLITHIC nature of the liner that is sprayed on and flows around joints eliminating the need for welds.

Results

The save-all tank had been repaired on time and within budget. The liner was sprayed from ceiling to floor including all inserts eliminating any risk to the tile and solving the problem of contamination from broken tiles and joint compound breaking off into the process liquids



**T
E
C
H
F
O
C
U
S**